

Bedford Independent Poverty Action Group


Chair Charlotte Day
(C.O. Bedford Women's Centre)



What is the role of IPAG?

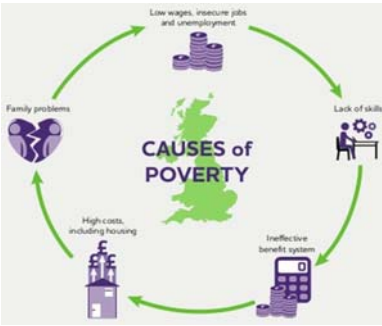
- **Forum** for VCS agencies in Bedford Borough to discuss poverty issues
- **Raise awareness** of poverty issues
- **Share expertise** on poverty issues
- **Central resource** on poverty issues
- **Advise and support** organisations working with people in poverty





Why do we need IPAG?

- Poverty is on the increase
- There needs to be coordinated anti-poverty approach in Bedford Borough

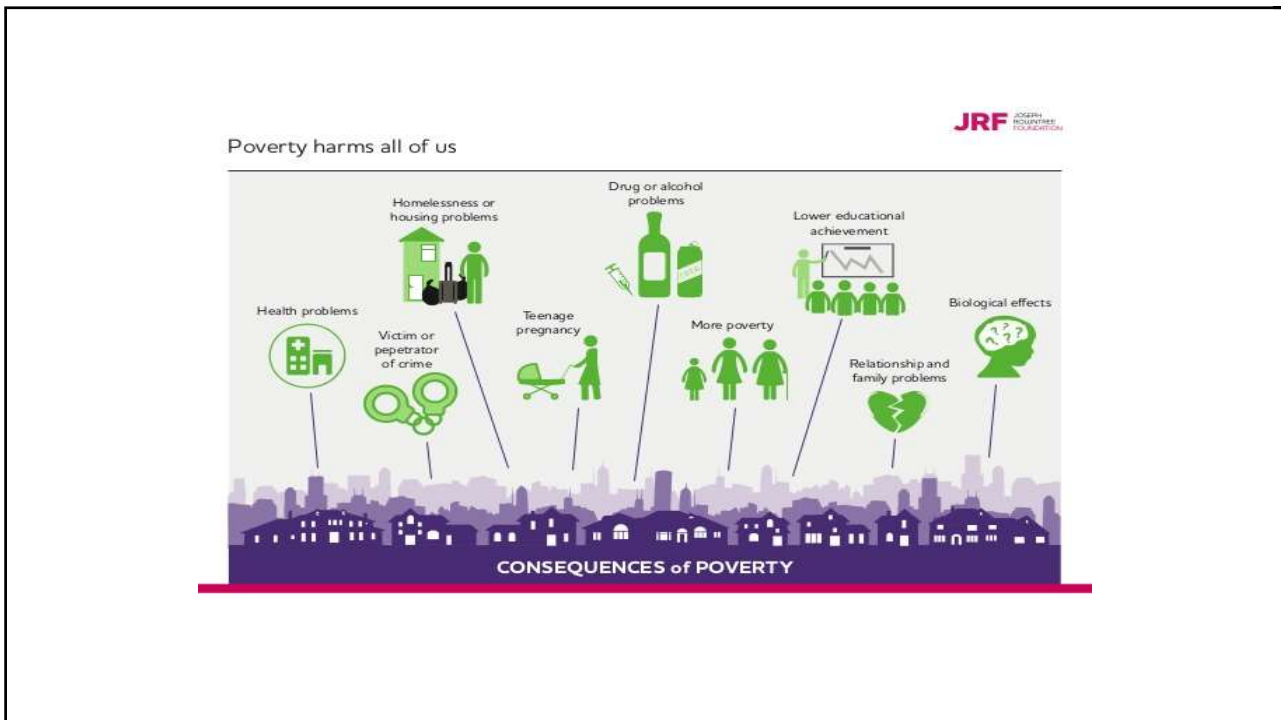


“UK Poverty 2017 highlights that overall, **14 million people** live in poverty in the UK – over 1 in 5 of the population.

This is made up of 8 million working-age adults, 4 million children and 1.9 million pensioners.

8 million live in families where at least one person is in work. “

Joseph Rowntree foundation Dec 2017



Actions To Date.....



- Brought together local organisations working with families and vulnerable adults
- The Uniform Drive
- Putting together information to help signpost people to services for Christmas.



Some of the organisations that have already signed up.

How to join IPAG?



You can sign up your organisation today.

Or

Email me your contact information

charlotteday@bedfordwomenscentre.org.uk

Questions?

